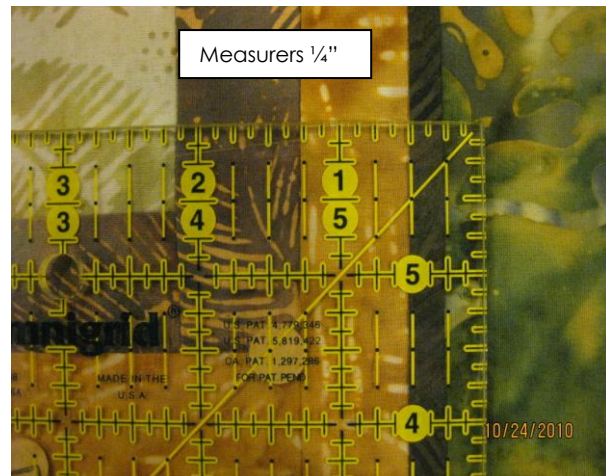
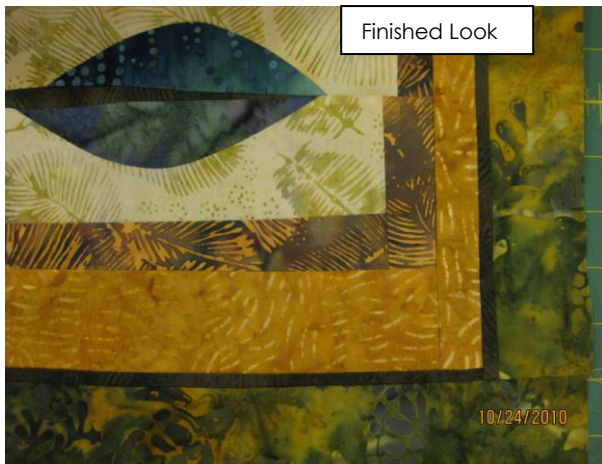


Special Narrow Border Demo

Presented by Irene Jaeb - November 4, 2010

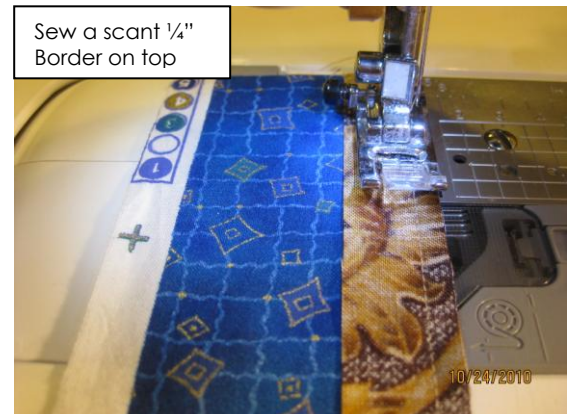
How to sew a perfect 1/4" border!!

- Have you ever tried to sew a narrow border between two borders on your wall hanging or table runner only to find out after you have sewn it on that it varies in width and that it is visibly noticeable!
- This method will give you a perfect 1/4" border every time!
- You can use this method any time you want a narrow border on a wall hanging, table runner, placemats, perhaps even a large quilt to visually set off your blocks, etc.
- When the border seams are pressed toward each other, it gives a raised finished look.



Method:

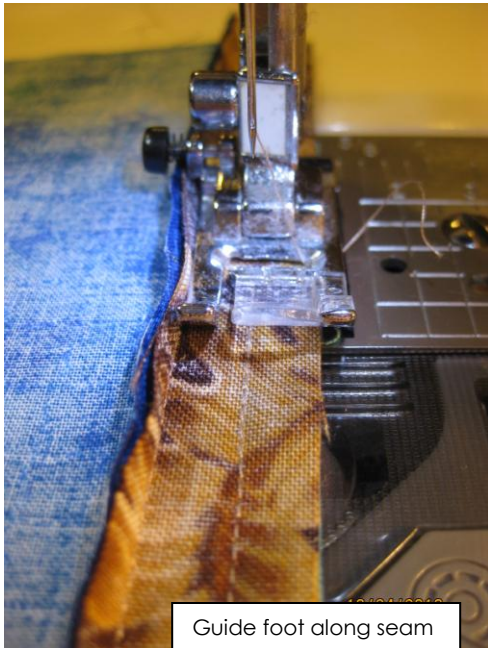
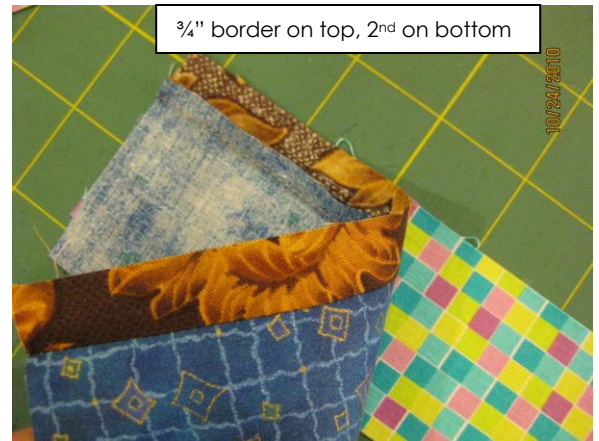
- Measure and cut your border strips 3/4" wide.
- Place your cut 3/4" border right sides together on the top of your pieced item.
- Adjust your needle position or use your 1/4" foot to sew a 1/4" seam, tip – sew a scant rather than a full 1/4" seam, because when you press it towards the other seam, you don't want it wider, the first seam fits under the second seam sewn.



- Finger press seam towards border, or press with iron, then finger press open. You want seam to stand up.

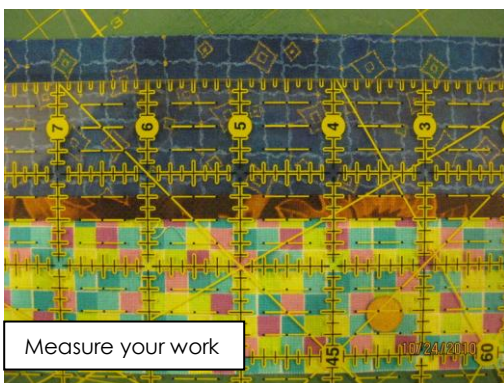
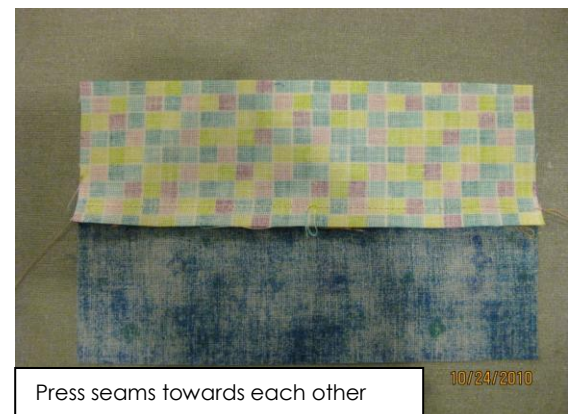
Special Narrow Border Demo – Page 2
Presented by Irene Jaeb - November 4, 2010

- Measure and cut your next border. Lay this border on the bottom, with your pieced item on top that has your $\frac{3}{4}$ " border you just sewed on, with right sides together.



- Set your needle position so it is exactly $\frac{1}{4}$ " away from the left side of the foot you are using, or use your machine foot that will give you a $\frac{1}{4}$ " away from left side. Do not use a scant $\frac{1}{4}$ " seam.
- You will now line up the left edge of your sewing machine foot with the seam you just sewed.
- Here is where you want your seam to stand up, so while you sew, your foot butts up against your seam. If it lies too closed/flat, then your foot is actually being pushed to the right side, thus creating a wider seam. Or if too open, then your foot may slide to the left, creating a too narrow seam. With foot against seam, sew on your border.

- Press seams toward each other, reminder . . . if seams do not lay flat; shave off a bit of the bottom seam allowance.



- **Turn over and admire your "Perfect $\frac{1}{4}$ " border"!!**

